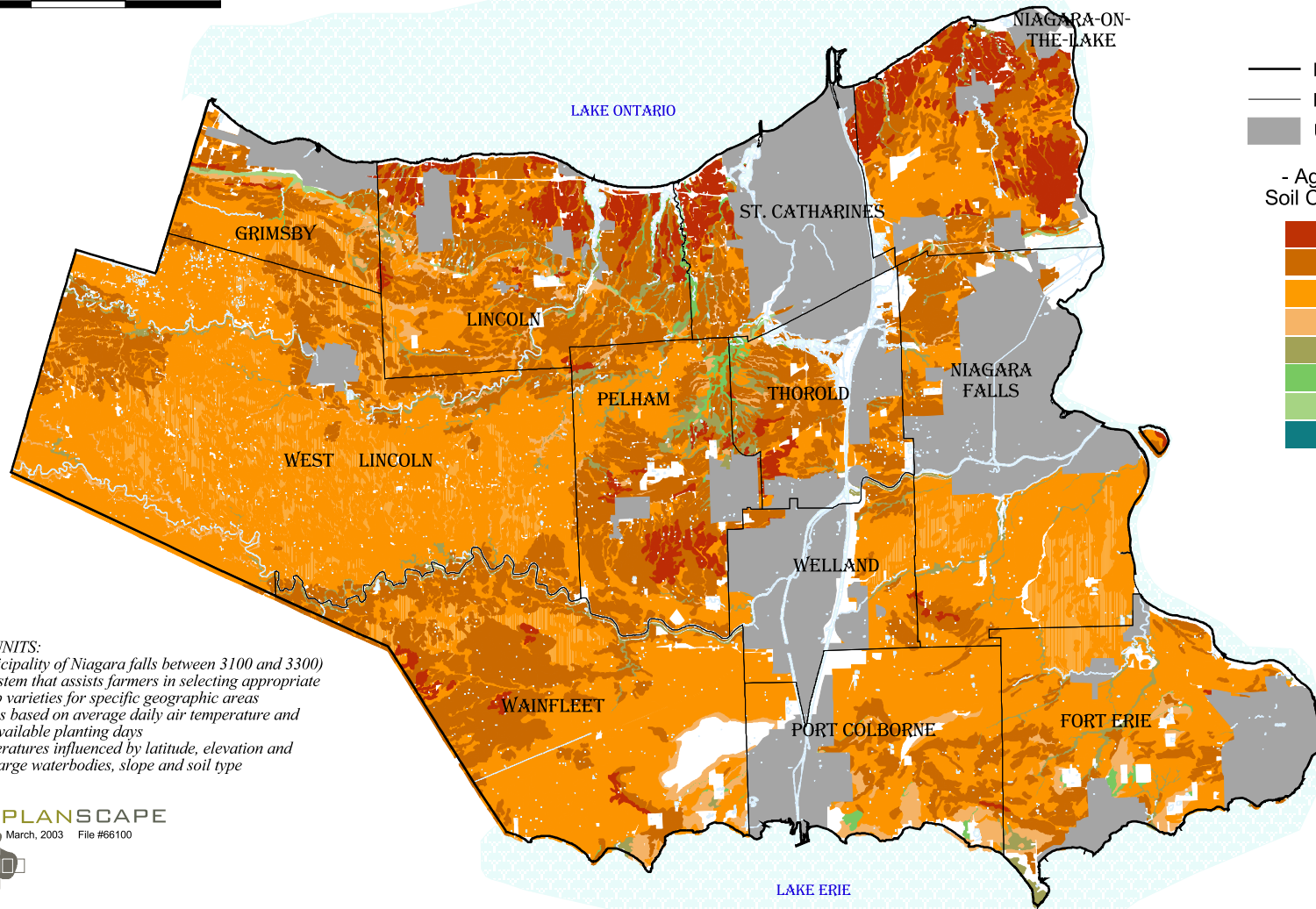
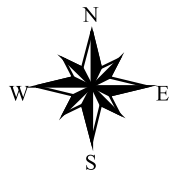


Figure 2.2
- REGIONAL MUNICIPALITY OF NIAGARA -
Agricultural Soil Classification (CLI)

REGIONAL AGRICULTURAL
ECONOMIC IMPACT STUDY



- Regional Boundary
- Municipal Boundary
- Urban Areas

- Agricultural -
Soil Classification

- Class 1
- Class 2
- Class 3
- Class 4
- Class 5
- Class 6
- Class 7
- Organic

CROP HEAT UNITS:
 (Regional Municipality of Niagara falls between 3100 and 3300)
 * Indexing system that assists farmers in selecting appropriate plant & crop varieties for specific geographic areas
 * Calculations based on average daily air temperature and number of available planting days
 * Daily temperatures influenced by latitude, elevation and location to large waterbodies, slope and soil type



Source:
 Regional Municipality of Niagara (existing information and mapping is considered by the Region to be pre-published), 2002.
 Produced by PLANSCAPE under Licence with the Ontario Ministry of Natural Resources, copyright Queen's Printer for Ontario, 2002.

NOTE:
 This map is for general illustration purposes only. For boundary interpretations, please contact the Regional Niagara Planning and Development Department.